



12 Herington Grove, Hutton

Brentwood

Guide Price £1,100,000 – £1,200,000



12 Herington Grove

Hutton, Brentwood

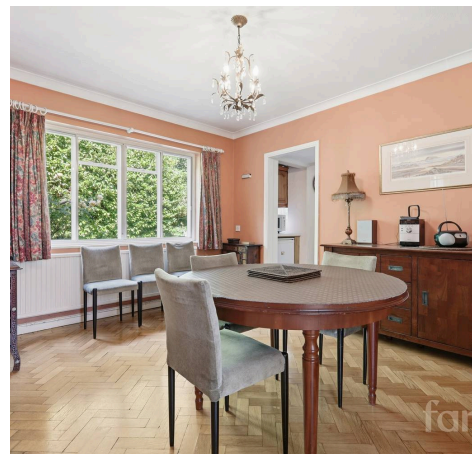
Council Tax band: F

Tenure: Freehold

EPC Energy Efficiency Rating:

EPC Environmental Impact Rating:

- Five bedroom detached house
- French doors with garden access
- Private patio and outdoor seating areas
- Attached garage with driveway
- Shenfield mainline station and shopping
broadway is located just 0.2 miles away
- Access to St Martin's School (sta)
- No onward chain
- Hutton Mount private estate location





Entrance Hall

Living Room

18' 3" x 11' 11" (5.55m x 3.64m)

Dining Room

12' 8" x 10' 10" (3.86m x 3.31m)

Wc

Kitchen

12' 4" x 9' 10" (3.75m x 3.00m)

Bedroom 5

15' 6" x 12' 6" (4.73m x 3.82m)

Bathroom

6' 11" x 5' 5" (2.12m x 1.65m)

Bedroom 1

13' 0" x 10' 10" (3.95m x 3.30m)

Bedroom 2

11' 11" x 8' 11" (3.64m x 2.73m)

Bedroom 3

11' 5" x 8' 11" (3.48m x 2.73m)

Bedroom 4

8' 11" x 8' 9" (2.72m x 2.67m)

Bathroom

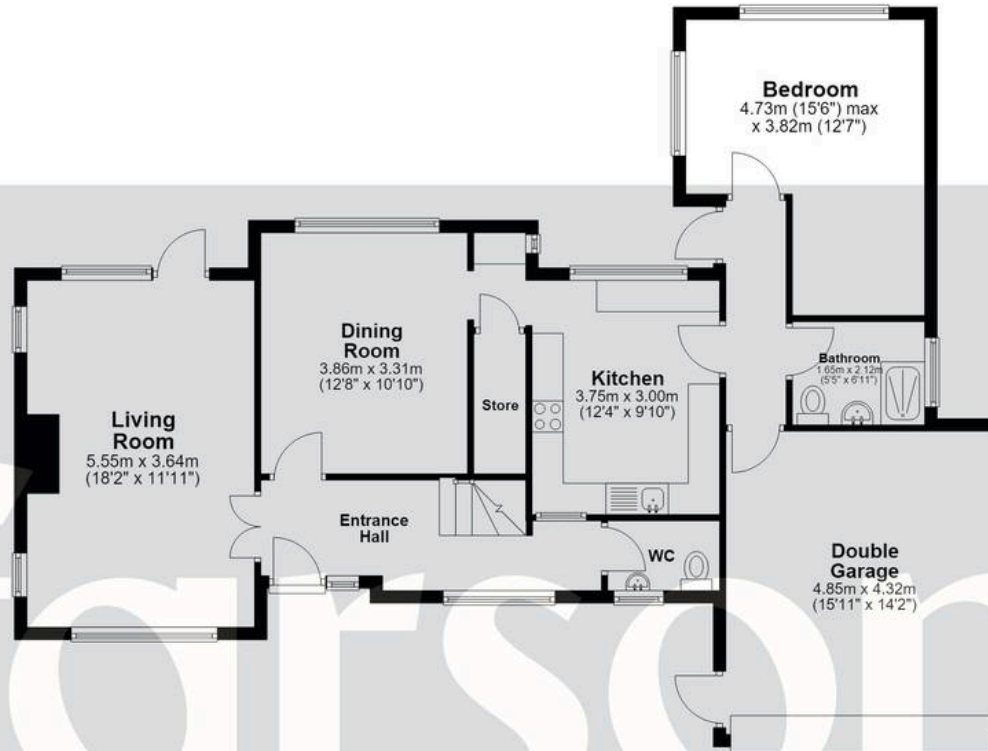
6' 8" x 6' 2" (2.04m x 1.89m)

Double Garage

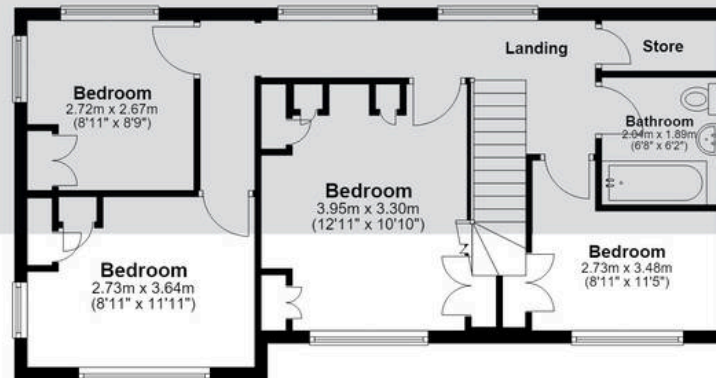
15' 11" x 14' 2" (4.85m x 4.32m)



Ground Floor
Approx. 104.1 sq. metres (1120.2 sq. feet)



First Floor
Approx. 57.1 sq. metres (615.1 sq. feet)



Total area: approx. 161.2 sq. metres (1735.3 sq. feet)

All measurements have been taken as a guide to prospective buyers only and are not precise. This plan is for illustrative purposes only and no responsibility for any error, omission or misstatement. The services, systems and appliances shown have not been tested and no guarantee as to their operability or efficiency can be given. Measurements may have been taken from the widest area and may include wardrobe/cupboard space. No guarantee is given to any measurements including total areas. Buyers are advised to take their own measurements.

© @modspphotouk | www.modspphoto.co.uk
Plan produced using PlanUp.

Herington Grove