



33 Middleton Road, Shenfield

Brentwood

Guide Price **£1,500,000**



## 33 Middleton Road

Shenfield, Brentwood

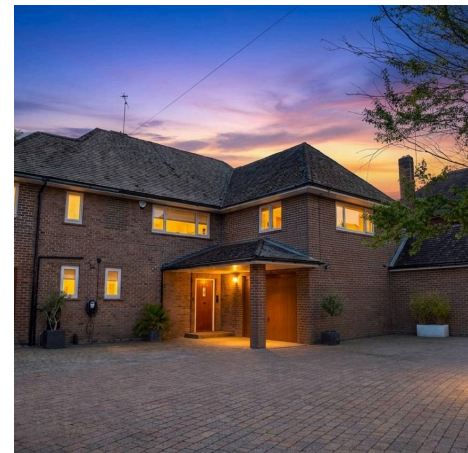
Council Tax band: G

Tenure: Freehold

EPC Energy Efficiency Rating: C

EPC Environmental Impact Rating: D

- Four bedroom detached family home
- Modern kitchen with integrated appliances
- Luxurious bathrooms with walk-in showers and freestanding bath
- Large landscaped garden
- Spacious patio area
- Large integral double garage
- Shenfield mainline station and shopping Broadway is located just 0.7 miles away
- Access to St Mary's School (sta)





### Entrance Hall

**Wc**  
x (m x m)

**Utility/Boot Room**  
10' 3" x 6' 2" (3.13m x 1.88m)

**Kitchen / Breakfast Room**  
18' 2" x 13' 5" (5.53m x 4.08m)

**Garden / Family Room**  
24' 1" x 8' 0" (7.35m x 2.43m)

**Sitting Room**  
24' 1" x 20' 0" (7.35m x 6.09m)

**Bedroom 1**  
20' 0" x 12' 1" (6.09m x 3.68m)

**Bedroom 2**  
14' 6" x 11' 9" (4.41m x 3.57m)

### En-suite

**Bedroom 3**  
11' 9" x 9' 11" (3.57m x 3.02m)

**Bedroom 4**  
11' 3" x 9' 11" (3.43m x 3.02m)

**Bathroom**  
x (m x m)

**Loft Room**  
15' 2" x 9' 11" (4.62m x 3.01m)

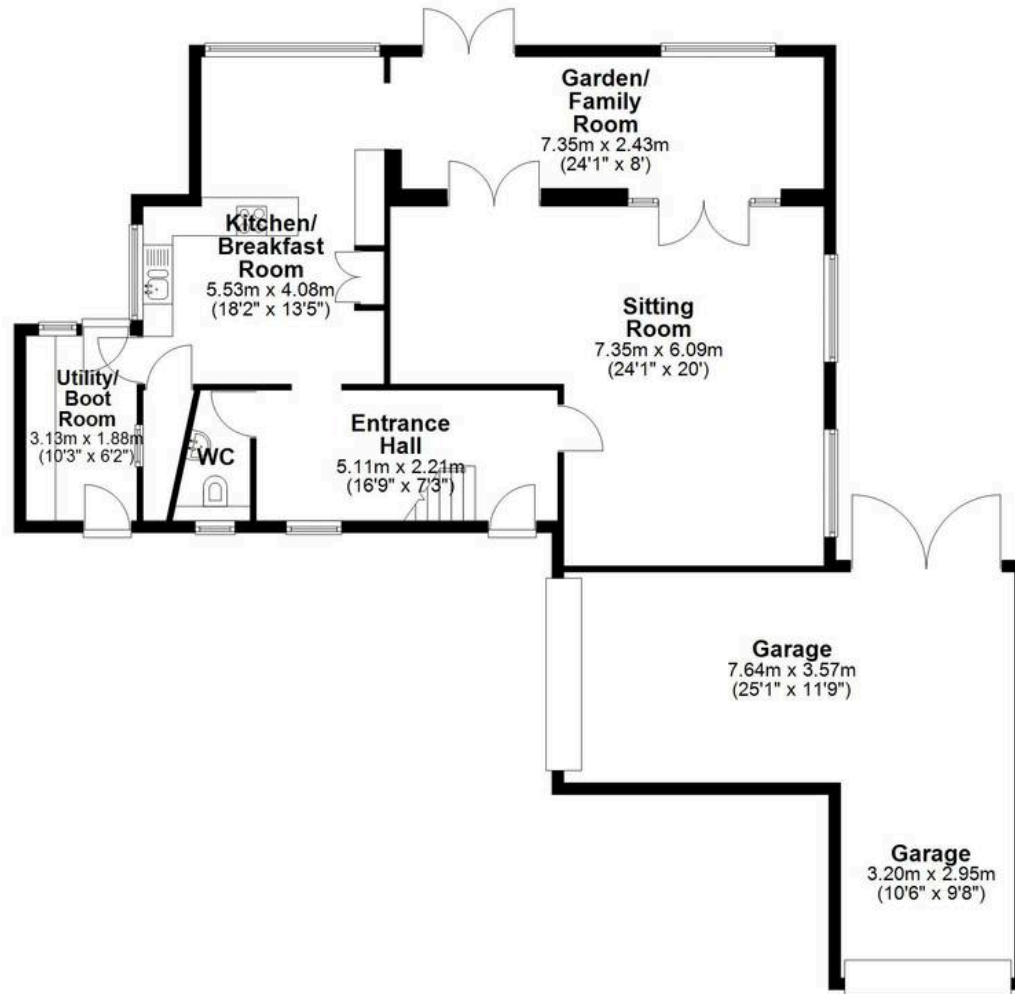
**Garage**  
25' 1" x 11' 9" (7.64m x 3.57m)

**Garage**  
10' 6" x 9' 8" (3.20m x 2.95m)



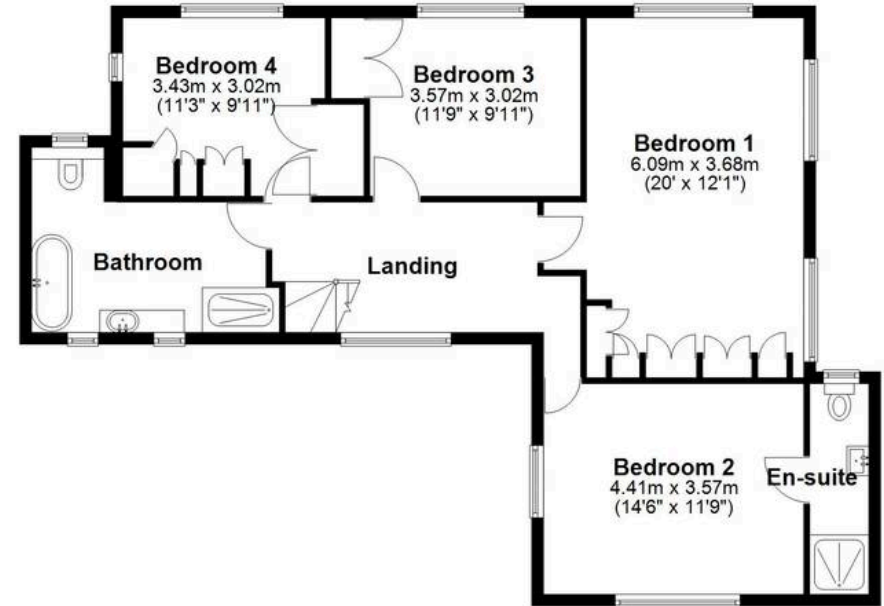
## Ground Floor

Approx. 135.1 sq. metres (1454.4 sq. feet)



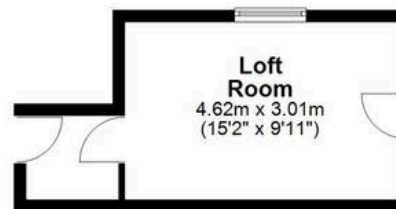
## First Floor

Approx. 89.7 sq. metres (966.0 sq. feet)



## Second Floor

Approx. 16.3 sq. metres (175.6 sq. feet)



Total area: approx. 241.2 sq. metres (2596.0 sq. feet)