



4 Sycamore Close, Great Warley

Brentwood

In Excess of £1,100,000



4 Sycamore Close

Great Warley, Brentwood

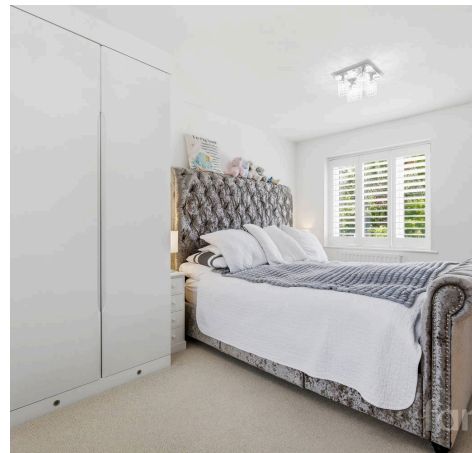
Council Tax band: E

Tenure: Freehold

EPC Energy Efficiency Rating: B

EPC Environmental Impact Rating:

- Detached five/six bedroom family home house
- Off-road parking on own driveway
- Detached garage
- Private wrap around garden with large patio
- Modern open plan kitchen with island with integrated appliances
- French doors to garden
- Modern bathrooms with walk-in showers
- Access to some excellent local schools (sta)
- Well located within 1.2 miles of Brentwood Elizabeth line station





Entrance Hall

Kitchen

13' 5" x 9' 2" (4.10m x 2.80m)

Dining Area

19' 0" x 10' 6" (5.80m x 3.20m)

Living Room

15' 8" x 13' 1" (4.78m x 4.00m)

Shower Room

6' 3" x 5' 3" (1.90m x 1.60m)

Study

9' 10" x 8' 6" (3.00m x 2.60m)

Bedroom 1

14' 1" x 15' 6" (4.30m x 4.73m)

Bedroom 2

13' 5" x 10' 6" (4.10m x 3.20m)

Bedroom 3

11' 5" x 8' 6" (3.49m x 2.60m)

Bedroom 4

9' 10" x 9' 2" (3.00m x 2.80m)

Bedroom 5

20' 6" x 7' 6" (6.25m x 2.29m)

En-suite

Office/Bedroom 6

18' 4" x 6' 9" (5.59m x 2.07m)

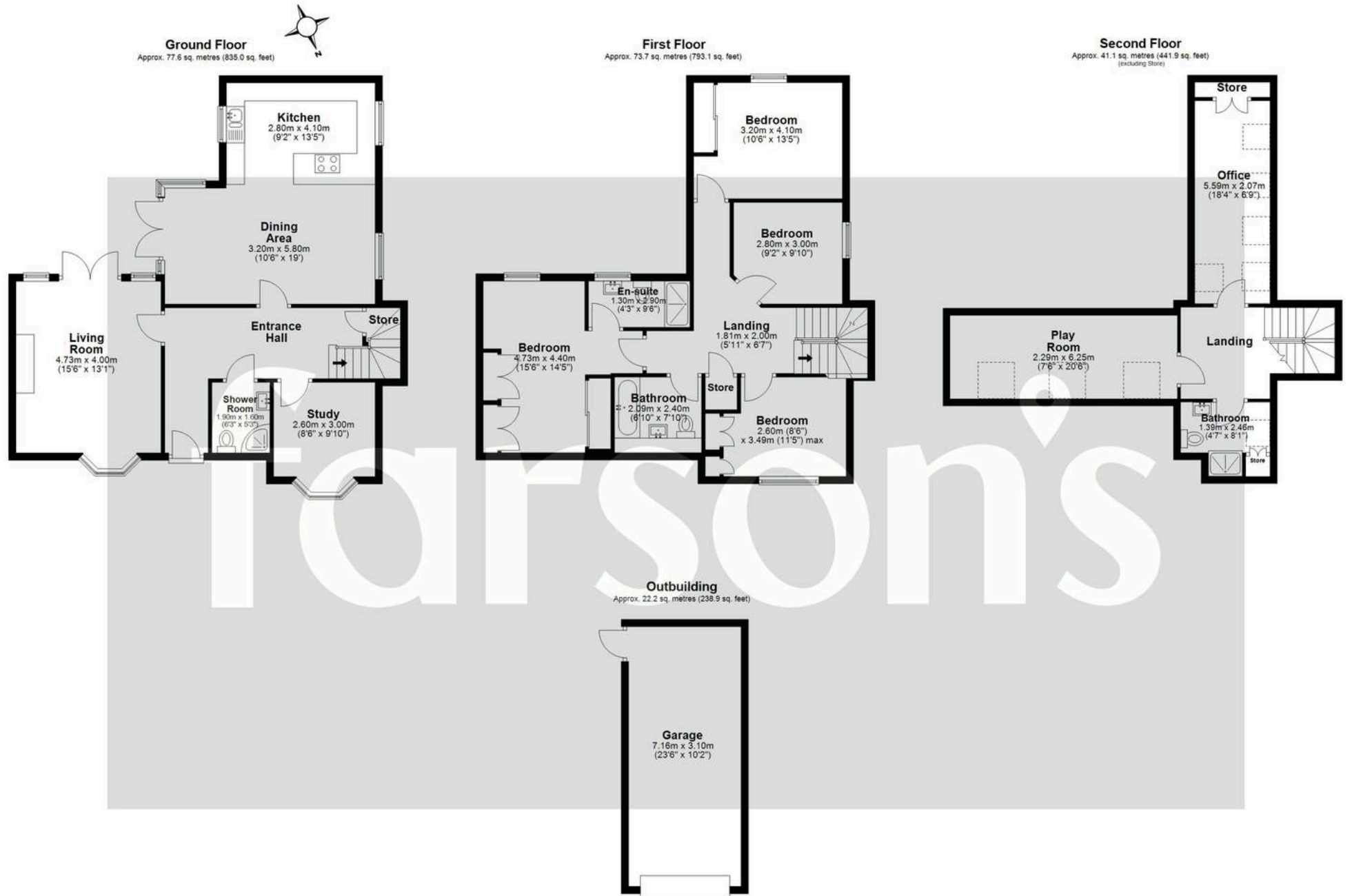
Bathroom

6' 10" x 7' 10" (2.09m x 2.40m)

Garage

23' 6" x 10' 2" (7.16m x 3.10m)





Total area: approx. 214.5 sq. metres (2308.8 sq. feet)

All measurements have been taken as a guide to prospective buyers only and are not precise. This plan is for illustrative purposes only and no responsibility for any error, omission or misstatement. The services, systems and appliances shown have not been tested and no guarantee as to their operability or efficiency can be given. Measurements may have been taken from the widest area and may include wardrobe/cupboard space. No guarantee is given to any measurements including total areas. Buyers are advised to take their own measurements.

© @moderphoto.uk | www.moderphoto.co.uk
Plan produced using PlanUp

Sycamore Close