



Beechwood House, Riseway, Shenfield

Shenfield

Guide Price £1,100,000

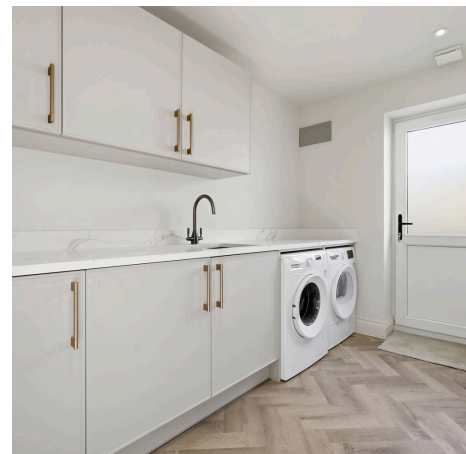
Beechwood House, Riseway

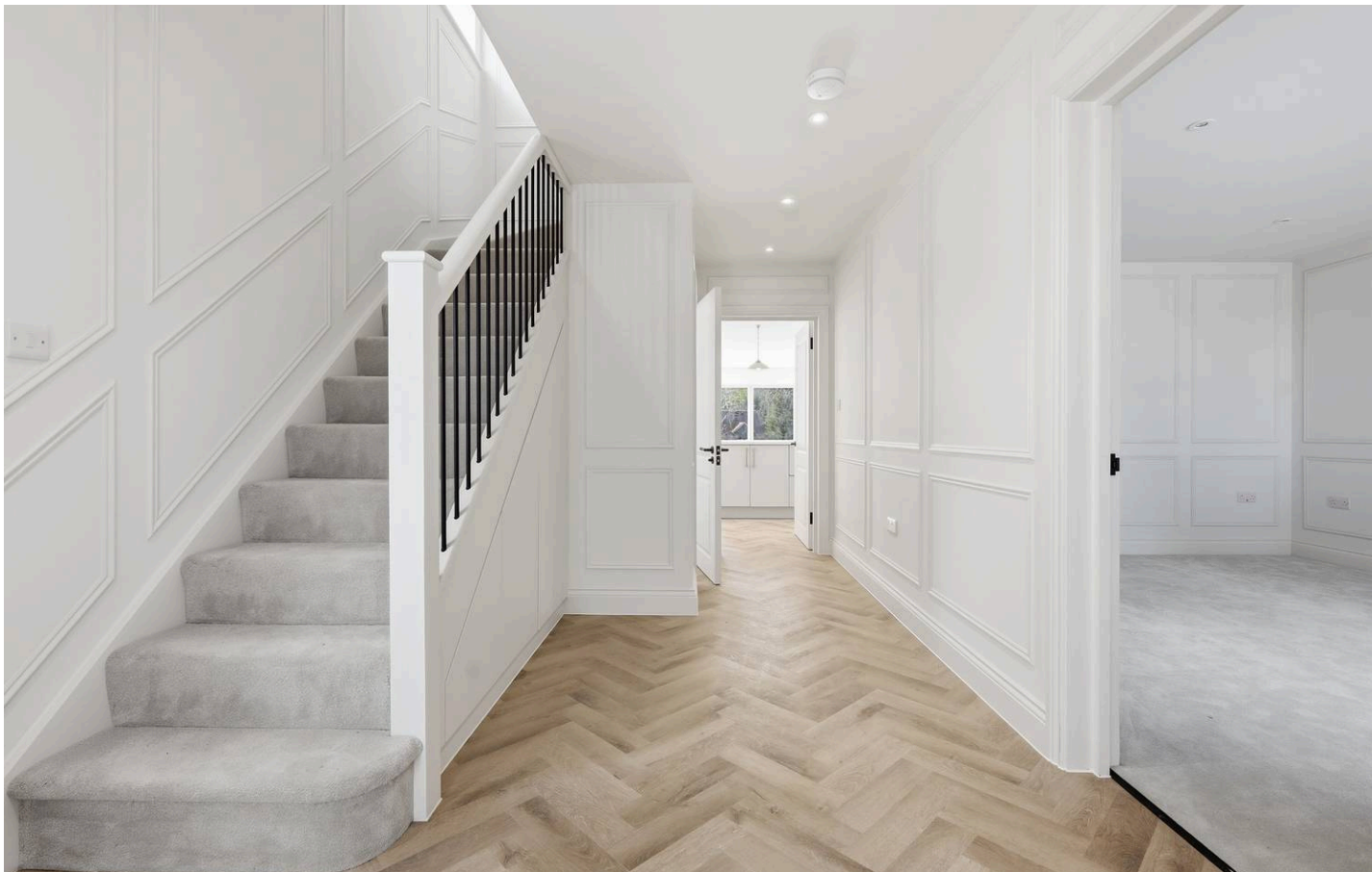
Shenfield

Council Tax band: TBD

Tenure: Freehold

- Brand new detached family home
- Modern hand made kitchen with island and integrated appliances
- Open plan living area
- Bi-fold doors to garden
- Private landscaped garden with spacious patio
- Walk-in shower and modern freestanding bath
- Built-in wardrobes and ample storage
- Integrated garage and off-road parking for numerous vehicles
- No onward chain





Entrance Hallway

WC

Living Room

14' 7" x 11' 10" (4.45m x 3.60m)

Kitchen/Dining Room

24' 7" x 21' 0" (7.50m x 6.40m)

Office

7' 1" x 9' 10" (2.15m x 3.00m)

Utility Room

7' 3" x 9' 10" (2.20m x 3.00m)

Plant Room

3' 3" x 9' 10" (1.00m x 3.00m)

Bedroom 1

15' 1" x 10' 2" (4.60m x 3.10m)

En-Suite

Bedroom 2

15' 1" x 10' 6" (4.60m x 3.20m)

Bedroom 3

11' 2" x 9' 10" (3.40m x 3.00m)

Bedroom 4

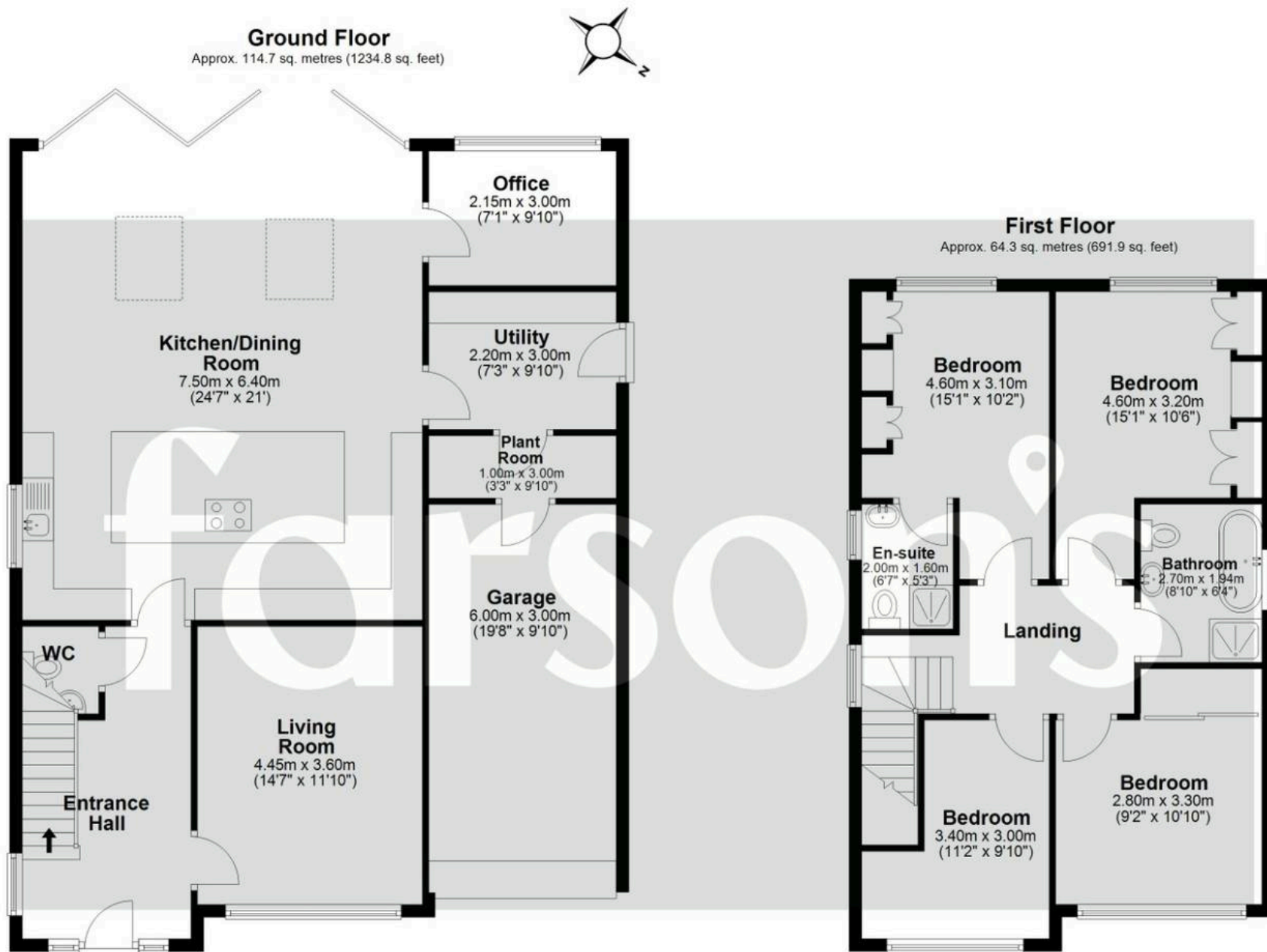
9' 2" x 10' 10" (2.80m x 3.30m)

Bathroom

Garage

19' 8" x 9' 10" (6.00m x 3.00m)





Total area: approx. 179.0 sq. metres (1926.7 sq. feet)

All measurements have been taken as a guide to prospective buyers only and are not precise. This plan is for illustrative purposes only and no responsibility for any error, omission or misstatement. The services, systems and appliances shown have not been tested and no guarantee as to their operability or efficiency can be given. Measurements may have been taken from the widest area and may include wardrobe/cupboard space. No guarantee is given to any measurements including total areas. Buyers are advised to take their own measurements.

© @modephotouk | www.modephoto.co.uk
Plan produced using PlanUp.□

Riseway (R)